

## How do I apply?

You can apply online through the fund website,

[www.access-to-elected-office-fund.org.uk](http://www.access-to-elected-office-fund.org.uk)

If you would prefer to apply by post or over the phone, please contact us and we will arrange this for you.

Our contact details are given below.

On the Access to Elected Office Fund website there are guidelines to help you fill in the application form.

## More information

For more details about the fund and how to apply for a grant, visit the Access to Elected Office Fund website at [www.access-to-elected-office-fund.org.uk](http://www.access-to-elected-office-fund.org.uk) or contact us as follows.

Telephone: 0845 864 5340

Textphone: 0845 864 5341

Email: [enquiries@access-to-elected-office-fund.org.uk](mailto:enquiries@access-to-elected-office-fund.org.uk)

## Other formats

If you would like information about the fund in Braille, in an audio format, as a PDF or in large print, please contact us.

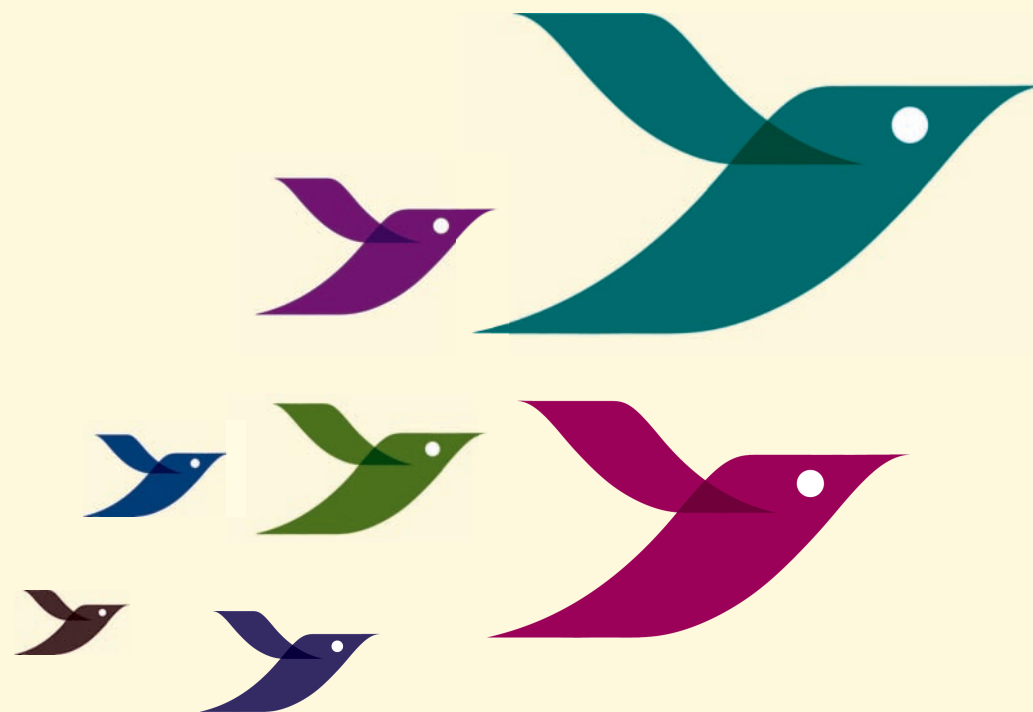
“Be positive and don't be put off by the barriers you will face: see these challenges as just one of the many that people have to face in life.”

**Former Councillor Richard Boyd, OBE**

[www.access-to-elected-office-fund.org.uk](http://www.access-to-elected-office-fund.org.uk)



# Access to Elected Office Fund



Convey is the independent administrator of the Access to Elected Office Fund.

## Have you thought about standing for elected office?

Becoming an elected representative – for example, a local councillor, a police and crime commissioner, a mayor or an MP – can be an exciting and life-changing experience. But standing for elected office can be daunting, particularly if you are disabled and have support needs which, if not met, may create extra barriers compared with a non-disabled person.

The Government is committed to providing extra support to tackle the particular obstacles which disabled people who want to become elected representatives may face.

## What is the Access to Elected Office Fund?

The Government has set up the Access to Elected Office Fund, as part of its Access to Elected Office Strategy, to help pay the disability-related costs that disabled people standing for elected office might face.

The fund can provide grants of £250 to £10,000.

“It is very important that candidates who face severe difficulties have the same opportunities as everyone else. I welcome the Government's efforts to create a level playing-field.” **Robert Halfon MP**

## Am I eligible?

You can apply for money from the fund if you:

- are eligible to stand in an election covered by the fund;
- are disabled; and
- can show that you have been involved in or are interested in politics or in civic, community or other relevant activities.

The fund website at [www.access-to-elected-office-fund.org.uk](http://www.access-to-elected-office-fund.org.uk) explains which elections are covered by the fund and how disability is defined under the Equality Act 2010.

## What does the fund cover?

You can apply for money from the fund to meet the costs of disability-related support that you need to stand for elected office, whether the costs are related to transport, communication, technology or support.

The fund only covers the extra costs that you might face. It does not cover costs that all candidates for elected office have to pay (for example, the cost of producing leaflets for campaigning). It can only help with the costs associated with you standing for elected office, not your general living costs.

“Don't hesitate to consider yourself as a candidate. Never assume that your impairment will be an issue, and never worry that your contribution will not be valued.”  
**Councillor Marie Pye.**